



ColorEdge CS2420

Let your creativity blossom with this monitor for hobbyists and prosumers. Featuring a sleek, user-friendly design and many of the advanced features of EIZO's ColorEdge lineup, you can enjoy creating and editing digital photography, illustration, and more.

Size: 24.1" (61 cm)

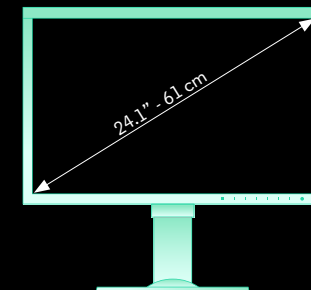
Resolution: 1920 x 1200 (16:10 aspect ratio)

Pixel Density: 94 ppi

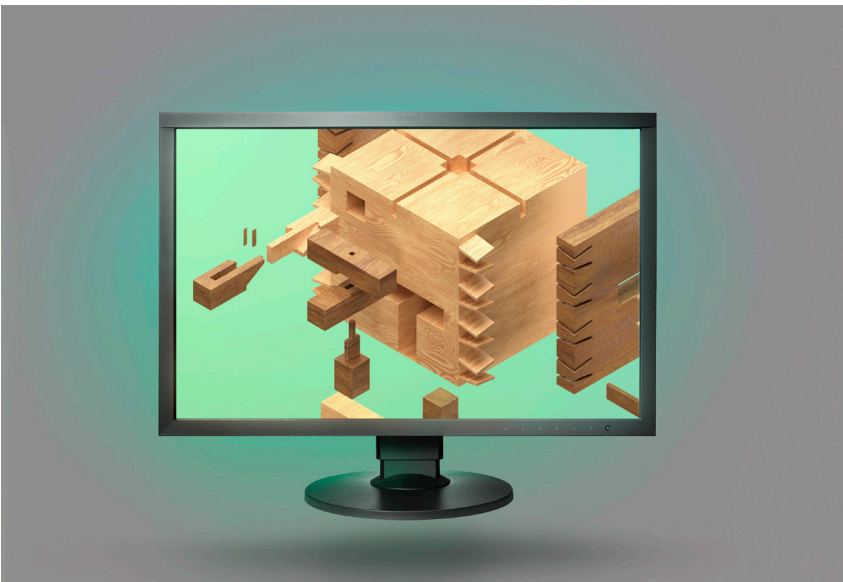
Colour: DisplayPort, HDMI: 1.07 billion (a palette of 278 trillion)

DVI: 16.77 million (a palette of 278 trillion)

Warranty: Five Year On-site

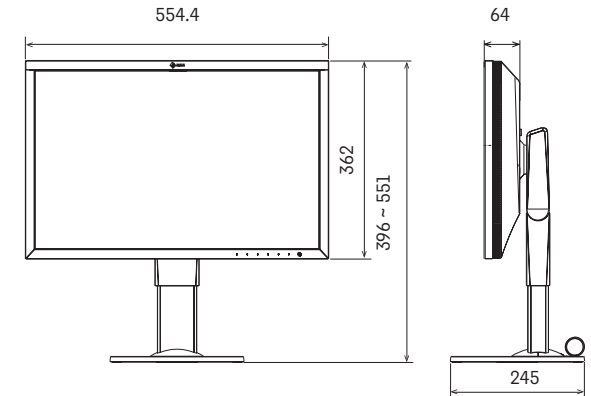


5 Year on site Warranty
★★★★★



ColorEdge CS2420

Dimensions (Unit: mm)



Panel

Type: IPS

Backlight: Wide-Gamut LED

Size: 24.1" / 61 cm

Native Resolution:
1920 x 1200 (16:10 aspect ratio)

Viewable Image Size (H x V): 518.4 x 324 mm

Pixel Pitch: 0.270 x 0.270 mm

Pixel Density: 94 ppi

Greyscale Tones: DisplayPort, HDMI: 1024 tones (a palette of 65 thousand) DVI: 256 tones (a palette of 65 thousand)

Display Colours: DisplayPort, HDMI: 1.07 billion (a palette of 278 trillion) DVI: 16.77 million (a palette of 278 trillion)

Viewing Angles (H / V, Typical): 178°, 178°

Brightness (Typical): 350 cd/m²

Recommended Brightness for Calibration:
120 cd/m² or less

Contrast Ratio (Typical): 1000:1

Response Time (Typical): 15 ms (grey-to-grey)

Wide Gamut Coverage (Typical):
Adobe RGB: 99%

Video Signals

Input Terminals: DVI-D 24 pin (with HDCP), DisplayPort (with HDCP), HDMI (with HDCP, Deep Colour)

Digital Scanning Frequency (H / V):
DisplayPort, DVI: 26 - 78 kHz, 24 - 61 Hz (VGA Text: 69 - 71 Hz) HDMI: 15 - 78 kHz, 24 - 61 Hz (VGA Text: 69 - 71 Hz)

USB

Function: 1 port for monitor control
3-port USB hub

Standard: USB 3.0

Power

Power Requirements:
AC 100 - 240 V, 50 / 60 Hz

Maximum Power Consumption: 92 W

Typical Power Consumption: 26 W

Power Save Mode: Less than 0.7 W

Standby Mode: Less than 0.6 W

Features & Functions

Digital Uniformity Equaliser: Yes

Preset Modes: Colour Mode (Custom, Adobe RGB, sRGB, Calibration)

Physical Specification

Dimensions (Landscape, W x H x D):
554.4 x 396 - 551 x 245 mm

Dimensions (Portrait, W x H x D):
362 x 565.4 - 647.2 x 245 mm

Dimensions (Without Stand, W x H x D):
554.4 x 362 x 64 mm,

Net Weight: 7.8 kg / 17.2 lbs

Net Weight (Without Stand): 5.0 kg / 11.0 lbs

Height Adjustment Range: 155 mm

Tilt: 35° Up, 5° Down

Pivot: 90°

Swivel: 344°

Hole Spacing (VESA Standard):
100 x 100 mm

Environmental Requirements

Temperature: 0 - 35°C

Humidity (R.H., non condensing): 20 - 80 %

Certifications & Standards

(Please contact EIZO for the latest information)
CB, CE, TUV/GS, cTUVus, FCC-B, Canadian ICES-003-B, VCCI-B, TUV/Ergonomics, RCM, RoHS, WEEE, EAC, Energy Labelling of televisions.

Included Cables

DisplayPort (2 m), HDMI (2 m)
AC power cord, USB cable

Warranty

Five years on-site^{1,2}

¹ Usage time is limited to 30,000 hours.

² Free from bright sub-pixels for 6 months for the date of purchase. With current LCD technology, a panel may contain a limited number of missing or flickering pixels.

EIZO Limited

1 Queens Square, Ascot Business Park, Lyndhurst Road, Ascot, Berkshire, SL5 9FE. UK

Website:

www.EIZOcolour.com

Telephone:

+44 (0) 1344-317-480